



Dig Participant Guide



2020

Hyde900 Participation guideV4

HYDE900

Dig Participant Guide

Essential rules and guidelines for the Hyde900 dig

Please read through each section and familiarize yourself with the rules and the basics before you start your session.

***“It’s very exciting that the Hyde900 group are going to dig again this year on the site of the great early 12th century Hyde Abbe: it’s an extraordinary story!”,
Professor Martin Biddle***

1. Before your session
2. What to expect on arrival
3. Health and Safety rules (including COVID-19 precautions)
4. Descriptions and guidelines of activities
5. Site map
6. FAQ

1. Before your session

Please read carefully through each section as there are some essential things you need to know before you arrive.

1. Wear warm and appropriate clothing for a mixture of weathers and sturdy non slip footwear with a closed toe.
2. Bring a COVID-19 suitable face covering and wear on site at all times. If you cannot wear a mask for medical reasons, please bring proof of this otherwise we will not be able to allow you entry on site. Children 11 and under are exempt from this requirement.
3. If you are unwell or show any symptoms of COVID-19, please inform us immediately on 07865569073 to cancel your session and do not attend.
4. A tetanus injection is advised
5. Please don't bring anybody extra with you as there will not be room to accommodate them.
6. Please note that by attending the event, you give your consent for the dissemination of any images taken.
7. Digging sessions are staggered to meet the requirements of the COVID-19 mitigation measures we are employing to meet government guidelines. Please arrive at the entrance to your site (as shown on the map) 15 minutes before your start time. After the start time entry to the site will be closed to limit the group to 6 persons at any one time. If you are late please go to the Support tent (location is shown on the map)

2. What to expect on arrival

You will be greeted by a Hyde900 volunteer who will check you against the booking list and enquire, if there are more than one of you, whether you are in a family or support group. If so you will be asked to wear a coloured sticker so that the site

supervisor will know that you do not need to keep to social distancing rules between members of your group.

On entering the garden please use the hand sanitizing stations before you start and regularly throughout your session.

You will be introduced to your supervisor who will brief you on health and safety and give you an introduction to archaeology

3. Health and Safety rules (including COVID-19 precautions)

COVID-19 Precautions

- Please wear a mask at all times and use hand sanitizing gel frequently. There is a hand sanitising station on each site.
- Please keep the mask covering both the face and the nose at all times while on site.
- If you are not in a family or support bubble please observe the social distancing rules of staying 2 metres apart if possible, otherwise not closer than a metre from any other person.
- All equipment is sanitized between sessions. You will be allocated a colour coded bucket in which your hand tools are stored. When a hand tool is changed eg using a brush instead of a trowel and hand shovel, please replace them in *your* allocated bucket

General site rules

- No running, or throwing of any object, is permitted on site. To ensure that instructions can be heard and concentration maintained, no radios or other

sound equipment are permitted (this includes headphones attached to a mobile phone or other music device).

- No one is permitted to enter the areas of excavation, or to undertake work on them, unless under HYDE900 supervision.
- No smoking is allowed on site.
- Failure to follow safety rules or other reasonable instructions from supervisors will result in termination of participation in the project.

Accidents and injuries

- A first aid kit will be available on site, and persons with mobile phones and use of cars will also be available if help is needed. All participants have the responsibility to report injuries rapidly to supervisors.
- Injuries, including minor injuries, should be reported for entry into the Accident Book, so that they can be reviewed and procedures developed to avoid future occurrences. If you feel unwell and wish to leave the site, you are, of course able to do so. But please let the site supervisor know before you leave. The supervisor will want to ensure that you can get home safely.

Tools and equipment

- Correct methods of using tools and equipment will be explained and these must always be followed. If unsure about the correct use of a tool it should not be used.

-
- If a participant finds a tool or piece of equipment to be faulty, it must no longer be used and reported to a supervisor.
 - Buckets and barrows must not be overloaded.
 - All tools and equipment must be left in a safe way, as instructed, and stored away at the end of any period of work.

Personal Health and Safety

- Stout footwear and other clothing appropriate to the work undertaken must be worn. It is each individual's responsibility to take appropriate action to avoid sunburn, sunstroke or dehydration. It is a good idea to bring: A hat. Sun cream. A water bottle. Any medication you may require.
- Alcohol may not be consumed on the site during working hours. Anyone whose capability to work is, in the opinion of the supervisory staff, impaired through consumption of alcohol or other substances will be asked to leave the site.
- If any participant feels threatened or at risk in their working environment, they should immediately report their concerns to a supervisor.

The archaeological site is the responsibility of HYDE900, not the owners of the land on which we are working. HYDE900 has done everything it can to make the excavation project as safe and enjoyable as possible. However, all participants are

responsible for looking after their own safety and that of those around them. These rules have been prepared to detail those responsibilities. Through your dig application and by attending the site, you indicate that you accept these rules and responsibilities. HYDE900 will accept no liability for accidents unless negligence is established, and cannot accept liability for loss or damage to the property of volunteers.

4. Descriptions and Guidelines of Activities

You will have chosen a specific activity at the time of booking. You may also get involved in other activities if there is a space to do so. Here is a description of each.

Digging

Digging or excavating, using a trowel, brush and shovel. You will be guided by your supervisor on how to remove the soil systematically. You will be looking for colour changes in the soil and archaeological finds.

Sieving

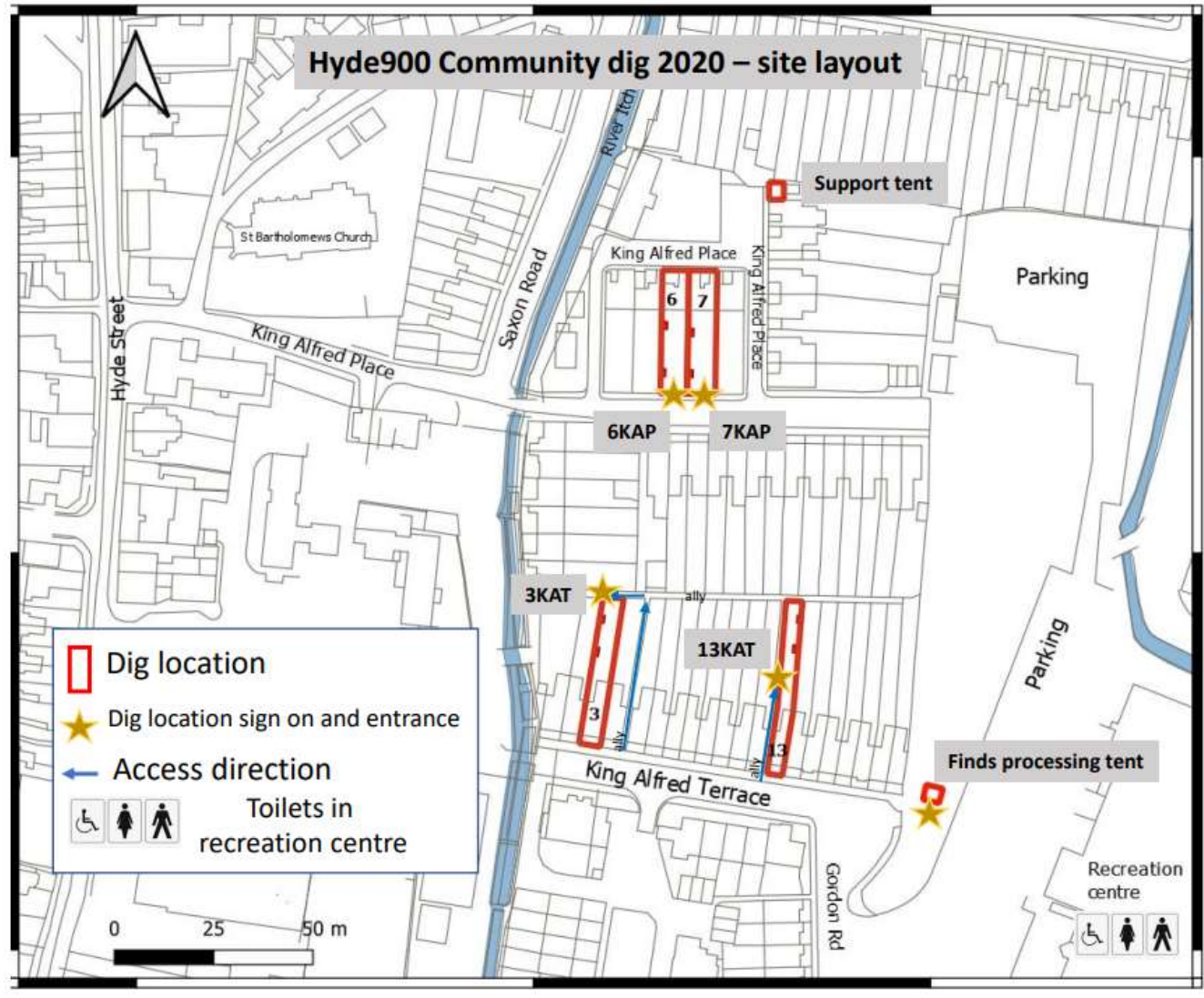
Sieving the spoil (soil that comes from the dig) for finds that may have been missed. Look closely. you might be looking for a piece of small pottery, or metal, or even something as small as a charred seed or piece of charcoal.

Finds processing

Sorting and cleaning the finds that have been taken from the site to the finds processing tent. Cleaning the soil from the finds helps us to find out what the object is and prepares it to be stored.

1. Site Map

This map includes details of each of the four dig sites, the Support tent, the Finds Processing tent and the toilets available in the Recreation Centre.



5. Frequently Asked Questions

What if the dig is postponed?

Should the dig have to be postponed, your fees will be refunded on request, or held over against any a booking at a future Hyde900 event

Can children attend?

Any participant under 18 must be accompanied by a responsible adult and will need to be booked in.

What if I don't want to wear a mask?

There are certain COVID-19 measures which are requirements of attendance at the dig. These include the need to wear face coverings unless the participants are under 12 years old or have particular health conditions (proof is required).

How do I cancel my session?

Please cancel your session with as much notice as possible by doing the following:

More than 24 hours: Email susanlillianjones@gmail.com

Less than 24 hours: Phone 07865569073

What do I do if I cannot find the site?

Check Google maps for King Alfred Place, Winchester. Check the site map in this document. We will have signs up too. Feel free to ask somebody if you are lost or call 07865569073