

HYDE ABBEY - REDISCOVERING THE LOST MINSTER OF ALFRED THE GREAT

The PLAN is that through the co-operation of HYDE900, The Friends of Hyde Abbey Garden, the University of Winchester, the Hampshire Cultural Trust and the local councils together with funding from the Heritage Lottery Fund it should be possible to develop a three-pronged strategy of information and interpretation:

DIGITAL

- The establishment of a DIGITAL INFRASTRUCTURE to enable visitors to roam the site of the Hyde Abbey precincts with mobile devices and be provided with access to 'site specific' (historical and architectural) information. In the first instance this would be primarily the ten stage 'Abbot Aston Abbey Tour' presented by the figure of the 13th century abbot.
- The establishment of a distinctive WEBSITE which will provide a long-term focus for a wide variety of information and other materials relating to:
 - the story of King Alfred and his family within the context of Anglo-Saxon history in the ninth and tenth centuries
 - the story of Hyde Abbey (historically, architecturally and archaeologically) from its origins as New Minster, through the move to Hyde and the building of Hyde Abbey and its subsequent history up to the dissolution of the monastery and beyond.

PHYSICAL 'IN SITU'

- The installation of a series of INFORMATION BOARDS around the precincts to provide overview information to interpret the site and its history.

- The installation of a GLASS WALL for the south side of the Hyde Gate Chamber to secure and weather-proof displays and events together with a light projection facility and a digital screen (also in the Chamber).
- The installation of simple DISPLAY FACILITIES in the Hyde Chamber for the exhibition of stonework and other artefacts from the abbey's history.
- The creation of a MONASTIC HERBALIST GARDEN to be developed as a community project in conjunction with Hyde Abbey Garden



Lewes Priory Herb Garden

ART WORKS

The installation of landmark INTERPRETATIVE ART/TECH WORKS including

- a wood-carved statue of 13th Century Abbot Aston (in the Hyde Gate Chamber),
- an engraving on the glass door of the Hyde Gate Chamber, probably of the Alfred Jewel

- a large scale 'bird's-eye' overview of the whole abbey site to be installed in the Gateway.

TIMING

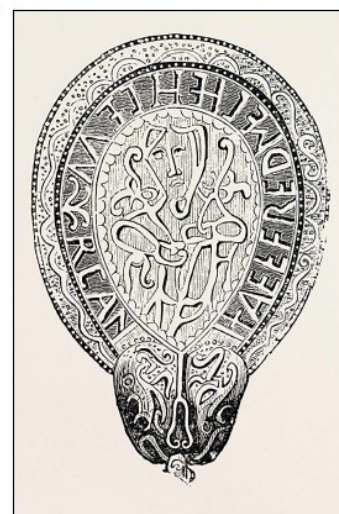
The immediate goal is to have the beginnings of the project in place by the Autumn 2016 as part of the Hampshire Cultural Trust's Royal Blood 'Big Theme' for 2016. Thereafter it is intended that,

under the management of Hyde900 and supported by the University of Winchester and the Friends of Hyde Abbey Garden, it will continue to evolve and develop into the future.

This is an ambitious programme. It needs the support of local people. To register your interest please go to www.hyde900.org.uk and look for the 'Hyde Abbey King Alfred project - Have Your Say'



13th Century Abbot Aston (Drawing by Alex Jones)



Engraving on the glass door of the Hyde Gate Chamber - The Alfred Jewel